

# Elevated-plus maze

for evaluating anxiety in rodents in rodents



## PRODUCT OVERVIEW

The standard elevated plus-maze is commonly used to assess anxiety-like behaviour in laboratory animals (rats/mice).

The maze is usually a cross shaped maze with two open arms and two closed arms, which is elevated above the floor.

This task exploits the conflict between the innate fear that rodents have of open areas versus their desire to explore novel environments. Security is provided by the closed arms whereas the open arms offer exploratory value. When anxious, the natural tendency of rodents is to prefer enclosed dark spaces to opened brightly lit spaces. In this context, anxiety-related behaviour is measured by the degree to which the rodent avoids the unenclosed arms of the maze.

Use our advanced (and still the most straightforward in the market!) SMART video-tracking system for automated animal behaviour registering in this test.

## Key Features

- Complete plus maze package including 3 sets of floors/walls (black, grey and white) for the closed arms
- Transparent borders included for the open arms (optional use)
- Non-reflecting material for optimizing video-tracking studies
- Odour-resistant material
- Modular structure for easy cleaning and storage

## APPLICATIONS

*Anxiety, screening of anxiolytic and anxiogenic properties of drugs, transgenic mice phenotyping...*

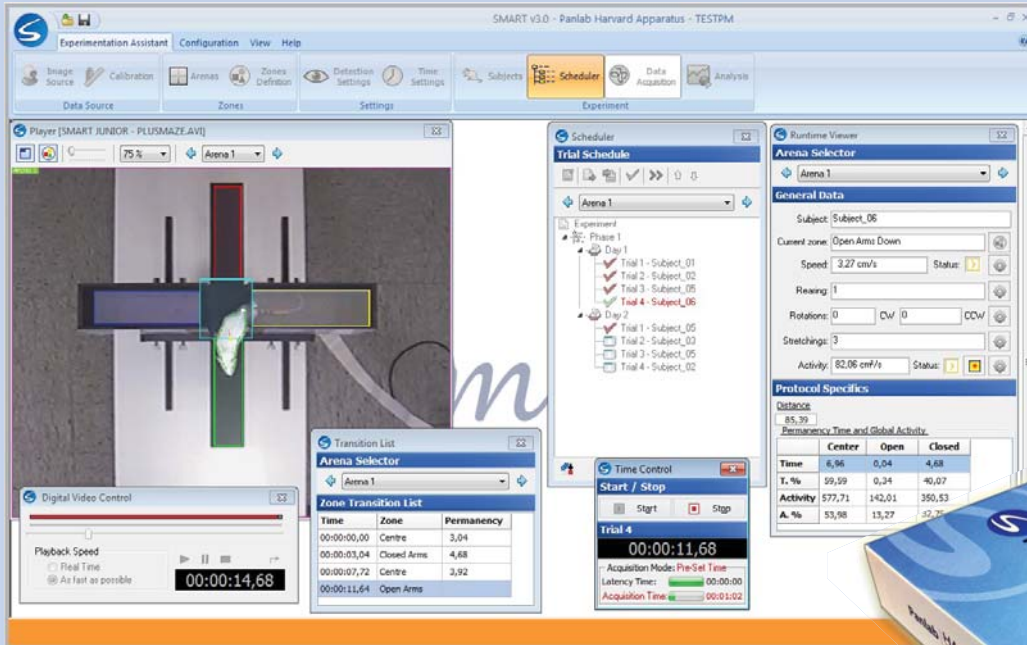
# Elevated-plus maze



## USE IT WITH OUR SMART 3.0 VIDEO-TRACKING SOFTWARE !

Smart 3.0, is the latest release of Panlab's SMART video tracking system features the most flexible and easy-to-learn software for the automated evaluation of behavior in the widest range of pre-clinical and neuroscience applications.

SMART 3.0 was developed with the daily experimental process in mind - easy-to-use interface, highly flexible structure fitting the most applications and budgets. Advanced features ensure reliable data and increased productivity, saving valuable time and resources.



- SMART 3.0 is modern, potent, flexible... and the most user-friendly in the market!
- Exceptional and reliable tracking under extreme conditions (low-lighting, great similarity between the subjects and the scenario, etc.)
- Set different brightness and contrast levels in the open and closed arms for optimizing animal detection!
- Video-digital recorder and START/STOP remote control included in all configurations
- All your experiment in one file: subject data base, calibration, time settings, experiment scheduler, meaningful data runtime panels, analysis configurations...
- Direct exportation to Excel, txt or html formats. Built-in data plots and tracks drawing tools.
- SMART's outstanding analysis tools generate a wide variety of reports and statistics, which can be configured at will and applied simultaneously within a batch of hundreds of trials.

### SPECIFICATIONS

LE840A Rat dimensions	Arms: 100 (W) x 1000 (D) mm; Walls: 350 (H) mm; Elevation from the floor: 650 mm
LE842A Mice dimensions	Arms: 60 (W) x 650 (D) mm; Walls: 150 (H) mm; Elevation from the floor: 400 mm
Material composition	Non-reflecting and odor-resistant Perspex

### ORDERING INFORMATION

#### STANDARD ELEVATED-PLUS MAZES (optimized for video-tracking use!)\*

LE840A	76-1121	Rats Elevated plus maze (incl. 3 colors of floors/walls - black, white, grey and open arms borders)
LE842A	76-1122	Mice Elevated plus maze (incl. 3 colors of floors/walls - black, white, grey and open arms borders)

#### VIDEO-TRACKING OPTIONS (see details of options and accessories in SMART 3.0 brochure)

SMART V3.0	76-0681	SMART platform including digital video recorder and START/STOP remote control (needs Experimental Modules)
SMARTPM	76-0689	Preconfigured Module for Plus-maze Exp.
SMARTCS	76-0682	Customizable Experiment Module for any kind of enclosures and experiment.

\* Contact use for customized options